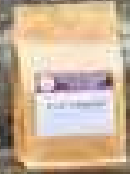


women IN BUSINESS



VANESSA BOONE

Burly and the Bean



HOW LONG HAVE YOU BEEN IN YOUR LINE OF WORK AND WHAT GOT *you* STARTED?

"I have been in the coffee industry for seven years now. And it's basically the love of coffee that got us where we are right now.

I'm a person that needs to have coffee in the morning to function and then I need it to get through the day. It's pretty much an essential in my life."

WHAT WOULD YOU TELL *your* YOUNGER SELF?

"Don't stress. Because that is all I do. So, if I could tell myself to find yoga 20 years ago and stay centered and calm and not stress. I would totally do that. In business, you always have moments of panic, and it will always work out you just need to stay focused and calm."

WHAT PIECE OF PROFESSIONAL ADVICE HAS HELPED YOU IN *your* CAREER?

"To stay humble is my outlook on it. And be appreciative of the moment, the business, what we create. We get a lot of praise, but we need to stay humble and never lose that. I always want to be grateful in that moment."

WHAT ADVICE WOULD YOU GIVE FUTURE women LEADERS?

"Don't be afraid and take change. I think the younger generation of women are already doing that, so I am always in awe of young girls and their... I wouldn't call it attitude, but their perspective and I think it's awesome. We run the world in every way possible."

WHO IN SEASIDE THAT IS A WOMAN IN BUSINESS INSPIRES *you?*

"My customers. All my customers that come through early in the morning. I have a lot of older women that are retirees, but they are out there still working. They are the ones that keep us going and they always come in with a good attitude and smile. They choose us and they are just awesome."